

Switching Client and Server Computers

Occasionally a server computer will need to be changed to a new computer, or to a client computer on the network. This can be due to performance issues, computer crash, computer upgrades, etc. To switch your client computer with a server computer, please follow the instructions below.

Create a Backup Database

On your current server computer, make a backup of your database to an external device such as a USB flash drive, or some other removable media.

1. Select **File > Backup and Restore > Backup Database**.
2. Click **Next**.
3. Select the location where you would like to make the backup and click **Save**.
4. Safely remove the external device and take it to the computer that you would like to make the new server.

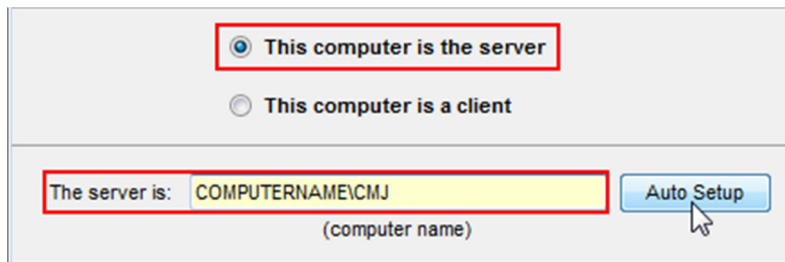
Create a New Server

If the software is not already installed on the new server, then go to the appropriate website and download and install the software.

- Salon Iris: <http://www.saloniris.com/supportdownloads.aspx>
- Orchid: <http://www.medicalspasoftware.com/supportdownloads.aspx>
- 123Pet: <http://www.123petsoftware.com/otherdownloads.htm>
- InkBook: <http://www.inkbooktattoosoftware.com/supportdownloads.aspx>

1. Register the software if you haven't yet by selecting **Help > Register**. Enter your serial number and activate the software if necessary.
2. Set the new computer as the server.
3. Select **File > Database Controls > Select Server**.
4. Choose **This computer is the server**.
5. The server name should be automatically listed¹.

1: The server name should be the name of your computer followed by **\CMJ** or **\SQLEXPRESS**, i.e. **COMPUTERNAME\CMJ**. If it does not appear this way, then enter the instance name if known, or click the **Auto Setup** button to find a list of active server instances.

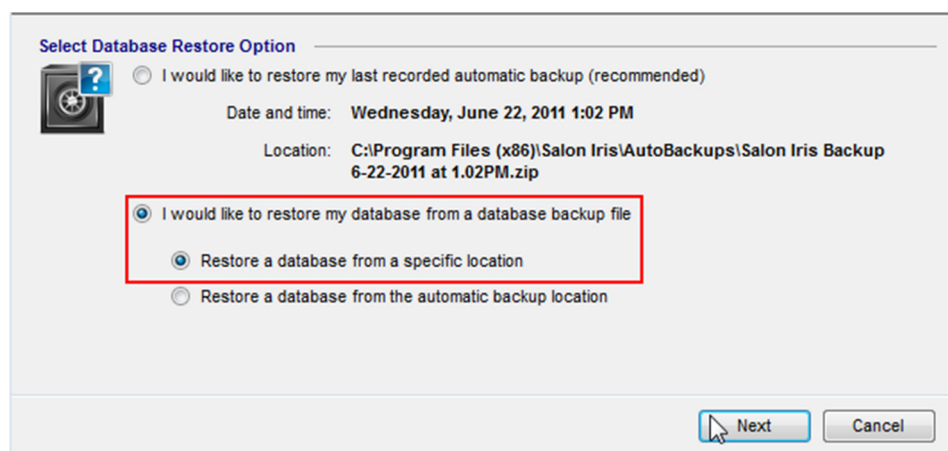


6. If you do not see a server name listed, click **Auto Setup** to find a list of server instances.
7. Select the correct instance and click **OK**.
8. Click **Connect**.
9. You may be prompted to create a **New** or **Blank Database**; create a **Blank Database**.

Restore Your Database from a Backup

Once the new computer has been established as the server you are able to restore your original database from the old computer.

1. Insert the removable media drive with your backup into the new server computer.
2. Select **File > Backup and Restore > Restore Database > Restore Database from Backup**.
3. Click **Yes** on the warning to override the current database.
4. Select **I would like to restore my database from a database backup file**.
5. Select **Restore a database from a specific location**.



6. Click **Next**.
7. Select the backup file from its location and click **Open**.

8. If you originally set up database password protection, then you will be prompted to enter the database password when opening the backup.

Connect Client Computers to New Server

If you are operating a networked version of the software, then each of your client computers will need to be connected to the new server.

1. On the client computer select **File > Database Controls > Select Server**.
2. Choose **This computer is a client**.
3. Enter the name of the server instance.
4. If you don't remember the name, then click **Auto Setup** to show a list of active server instances.
5. Select the new server computer from the list and click **OK**.
6. Click **Connect**.
7. If you set up database password protection, then you will be prompted to enter the database password when you connect to the server.
8. Repeat **Steps 1-7** for each client computer on the network.