

Installing SQL Server 2005 Express

SQL Server 2005 Express Edition is a free version of SQL Server 2005 designed for data-driven applications. SQL Server 2005 Express Edition (SQL Server Express) replaces Microsoft SQL Server 2000 Desktop Engine (MSDE) as the free version of SQL Server.

SQL Server 2005 Express Edition does not install .NET Framework 2.0 or .NET Framework 3.5. Before installing SQL Server 2005 Express Edition on Windows XP and Vista it is best to install .NET Framework 3.5 (Service Pack 1), and Windows 7 users can skip to the SQL Server 2005 installation.

This document will provide step-by-step instructions on installing .NET Framework 3.5 (Service Pack 1), as well as SQL Server Express, all are available for free download from Microsoft's website.

It is always recommended that you backup your database before attempting to install SQL Server Express.

Download Links:

.NET Framework 3.5

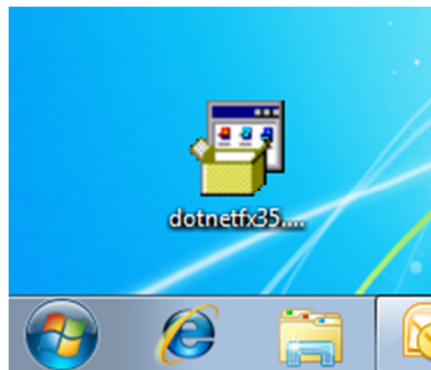
<http://www.microsoft.com/downloads/en/details.aspx?FamilyID=d0e5dea7-ac26-4ad7-b68c-fe5076bba986>

SQL Server 2005 Express

<http://www.microsoft.com/downloads/en/details.aspx?familyid=220549b5-0b07-4448-8848-dcc397514b41&displaylang=en>

Installing .NET Framework 3.5 (SP1) (Windows XP and Vista)

1. Download and save .NET Framework 3.5 (Service Pack 1) to your Desktop. Double-click on the **dotnetfx35.exe** file to begin the installation. You may be prompted to run the installer, click **Run**.

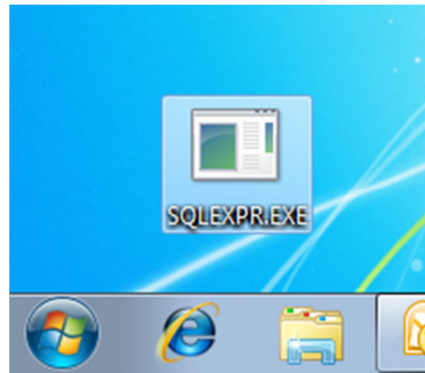


2. Click the **Next** button.

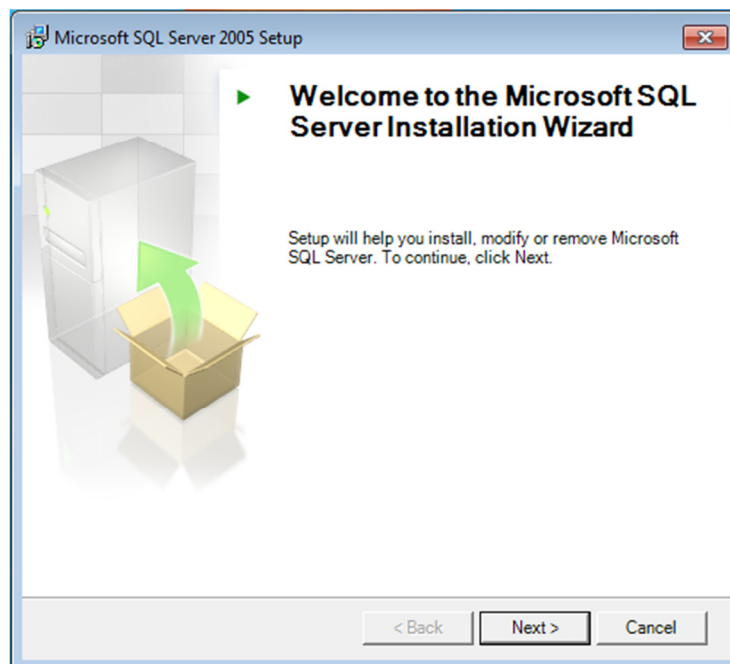
3. Check the box to accept the terms of the License Agreement. Click the **Install** button. The installation may take several minutes to complete. When the installation is complete, click the **Finish** button and then restart your computer.

Installing SQL Server 2005 Express

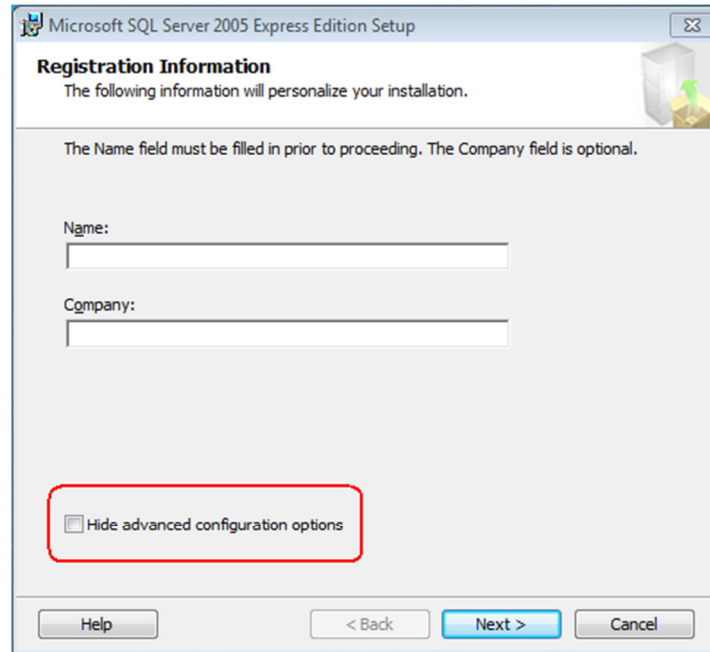
1. Download and save SQL Server 2005 Express to your hard drive. Double-click on the SQLEXPRESS.EXE file to begin the installation. You may be prompted to run the installer, click **Run**.



2. Check the box to accept the terms of the License Agreement. Click the **Next** button. The install shield will do a prerequisite check on your system. Once the prerequisite check is completed, click the **Next** button.
3. Click the **Next** button on the installation welcome screen.

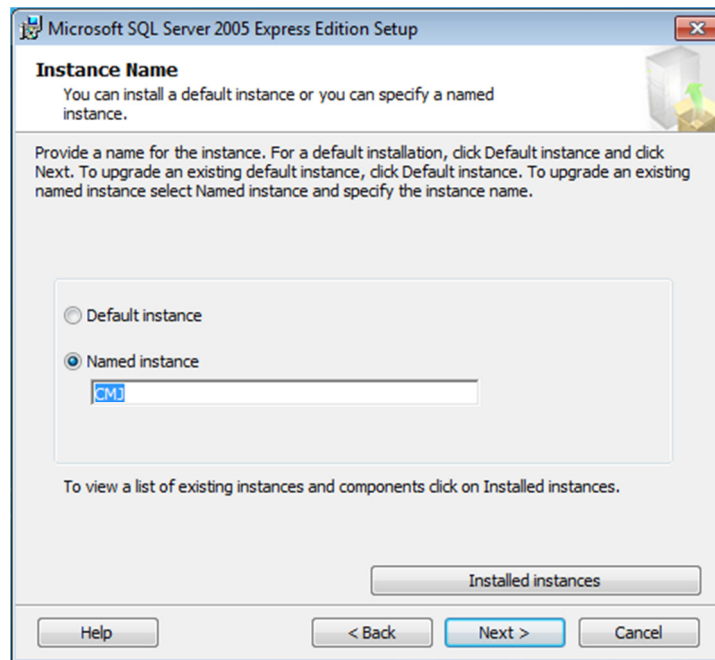


4. The install shield will now do a system configuration check. If potential installation problems are detected, deal with them accordingly¹. If the system configuration check is successful click the **Next** button.
5. Fill out the Registration Information window and uncheck the **Hide advanced configuration options** box, and then click the **Next** button.

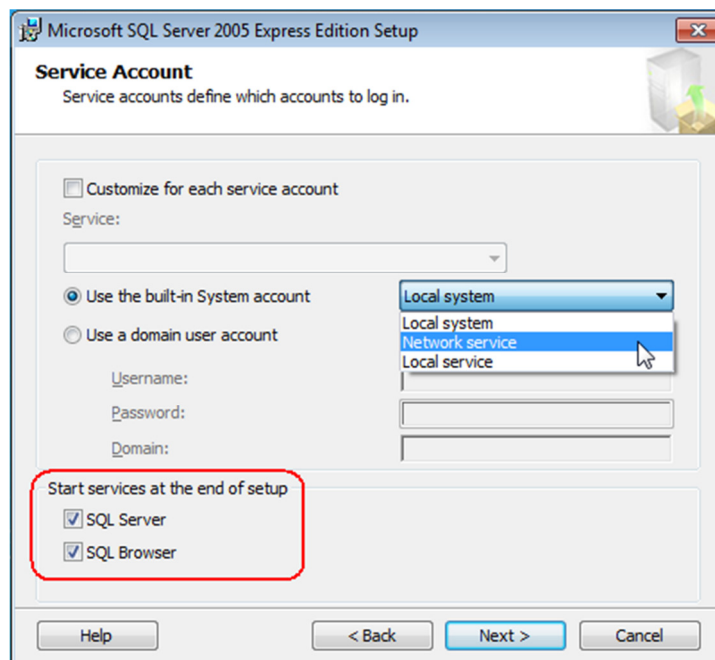


6. On the Feature Selection window, click the **Next** button to continue.
7. In the Instance Name window, select the **Named instance** radio button and make sure the instance name is **CMJ**. Click the **Next** button.

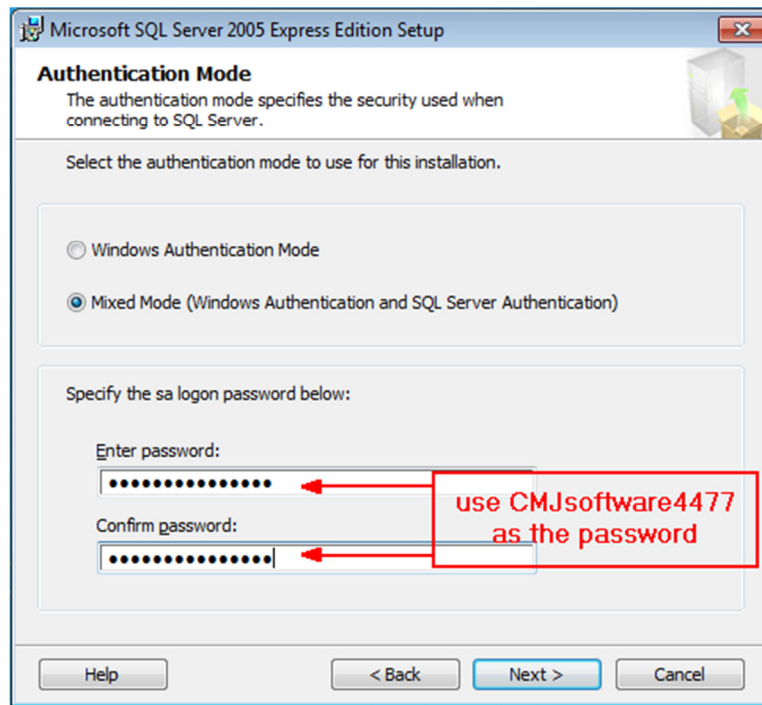
1: potential problems may arise when installing SQL Server 2005 on Windows XP if MSXML6 (Service Pack 2) is installed. To check this on Windows XP, open your Start Menu, and go to the Control Panel. Double-click on Add/Remove Programs and scroll down to check for MSXML6 (Service Pack 2). If it is there, it can only be removed by using the Windows Installer Cleanup program. You can download the Windows Installer Cleanup program for free.
<http://www.daysmart.com/Downloads/WindowsCleanup.exe>



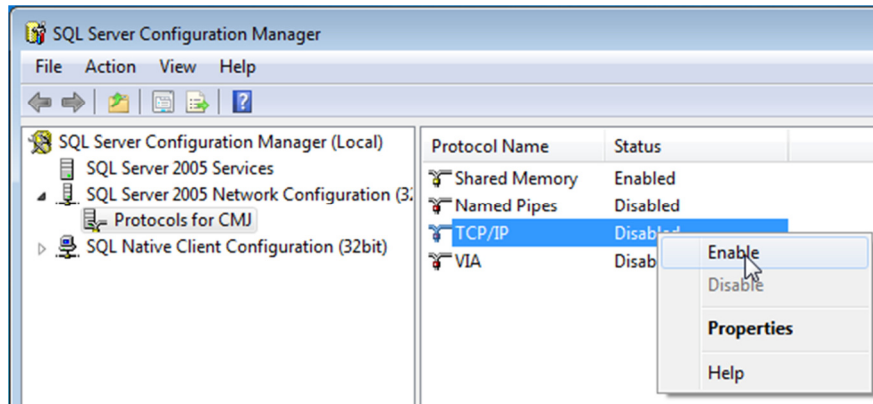
8. Click the **Next** button on the Existing Components window.
9. In the Service Account window select **Local System** if using Windows XP, or select **Network Service** if using Windows Vista or 7. Make sure to check both **SQL Server** and **SQL Browser** under Start services at the end of setup, and then click the **Next** button.



10. In the Authentication Mode window, select the **Mixed Mode** option and specify the sa logon password to be **CMJsoftware4477**. Click the **Next** button.



11. Click the **Next** button on the Collation Settings window.
12. Click the **Next** button on the User Instances window.
13. Click the **Next** button on the Error and Usage Report Settings screen.
14. Click the **Install** button on the Ready to Install window.
15. Click the **Next** button on the Setup Progress window.
16. Click the **Finish** button on the Completing Microsoft SQL Server 2005 Setup window.
17. Now it is necessary to enable **TCP/IP** in the **SQL Server Configuration Manager**. Open the **Start Menu > All Programs > Microsoft SQL Server 2005 > Configuration Tools > SQL Server Configuration Manager**.
18. In the **SQL Server Configuration Manager**, click on **SQL Server 2005 Network Configuration** then double-click on **Protocols for CMJ**. Next, right-click on **TCP/IP** and select **Enable**. For the changes to take effect, SQL Server must be restarted.



19. Click on **SQL Server 2005 Services**, then right-click on **SQL Server (CMJ)** and select **Restart**.

